

making a difference



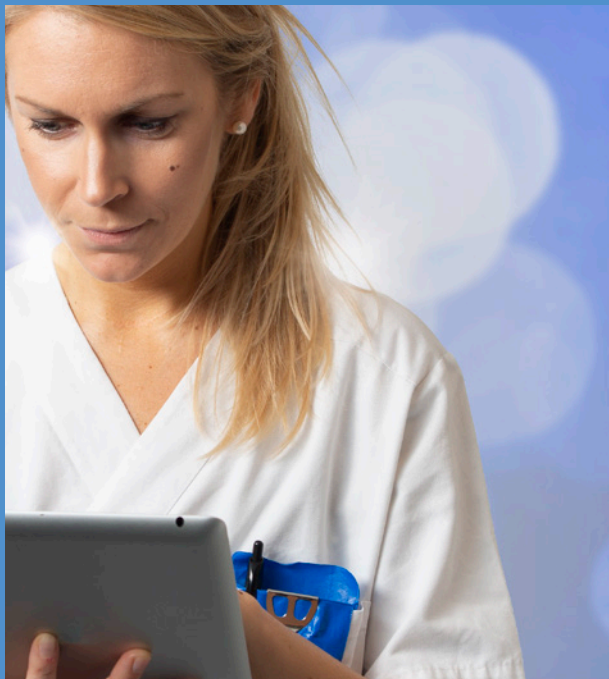
**stick**  
to safety



## CLiP<sup>®</sup> and SWiTCH

Automatic safety catheters

For safe and successful insertion



Needlestick injuries due to the use of non-safety devices are still a significant risk factor for health care professionals worldwide, putting them in danger of bloodborne diseases such as hepatitis and HIV.

Injuries due to contaminated puncture devices are still the most frequent cause of accidents in hospitals. This is a significant source of danger for many employees in the healthcare industry.

At this moment in time, there are already more than 20 bloodborne pathogens that we know of. The most dangerous are HBV, HCV and HIV. Recent studies show that it is up to ten times more likely for infections to occur in a hospital setting than in an external setting.

The aftermath of an infection can have far-reaching effects on both the career and the personal circumstances of the affected person and his/her family, with social as well as financial consequences. This is a burden that cannot be carried by the affected person or insurance company.

Damages must be averted by correct prevention.

## For safe and successful insertion

Our I.V. and arterial catheters are designed with the health care professionals working environment in mind. Our focus is to provide products that are user friendly, safe, sharp and with a consistent quality, so you can focus less on worrying about needlestick injuries and more on giving the best care to your patients.



### AUTOMATIC SAFETY

- Automatic needlestick protection
- No additional action is required
- Tactile activation to comply with ISO23908:2013
- Colour coded for good visibility according to ISO10555-5:2013



### EXCELLENT INSERTION PROPERTIES

- Sharp needles for effective and gentle penetration
- Quick blood response
- Reliable - every product feels the same
- Flexible gripping techniques



### COMPREHENSIVE RANGE

- Variety of gauges and lengths for different clinical needs
- Stabilization wings for secure fixation
- Version with injection port
- Catheters available in Polyurethane (PUR) and Fluorinated Ethylene Propylene (FEP)



### SMALL ENVIRONMENTAL FOOTPRINT

Compact product and packaging design

- Low material consumption
- Low transport volume
- Low handling and storage volume
- Low waste volume



When working with the very young ones – the newly born, toddlers – or the elderly, it is important to be gentle and at the same time efficient. The insertion needs to be successful the first time. Neonatal, pediatric and elderly patients have small veins, and therefore need an extra small catheter.

Elin Johnsson, specialist nurse

## CLiP® Neo

– more time to focus on your patients



**CLiP® Neo is an automatic safety I.V. catheter specifically designed for small veins primarily found in the neonatal, paediatric or elderly patient groups.**

### **Instant blood response**

Small veins have no tolerance for blind insertion. That is why the specially designed notch quickly indicates the needle tip position. The notch facilitates the flashback and speeds up the visual indication by making blood appear between the catheter and needle as soon as the tip of the needle is in the vein.

### **First time insertion success**

CLiP® Neo is available in two gauge sizes; 24G and 26G. Our catheters are made from FEP which is practically friction-free. They are developed to increase first time insertion success.



No matter the conditions at the clinic or hospital, the insertion of a venous catheter should be successful in the first try. That requires sharp needles. It's also easier if the catheter can be controlled in an individual way and if you have several gauge sizes to choose from. When you have full control, you feel more confident and the patients feel more relaxed and safe.

Anna Karlsson, specialist nurse

## CLiP® Winged and CLiP® Ported

– gives you better control



CLiP® Winged and CLiP® Ported are automatic safety I.V. catheters with a comprehensive range, to meet demanding physical conditions and different clinical needs.

### Flexibility for your needs

CLiP® Winged and CLiP® Ported are available in a vast variety of gauge sizes (14-24 gauge), lengths and materials to put you in control of various clinical situations.

The catheter hub (with additional wing holder on CLiP® Winged) offers a stable platform to grip during insertion and provides multiple gripping alternatives.

The injection port on CLiP® Ported provides easy bolus administration.

### High pressure injection

CLiP® Winged and CLiP® Ported can be used to inject contrast media. Our catheters are suitable for high pressure injections up to 305 psi.





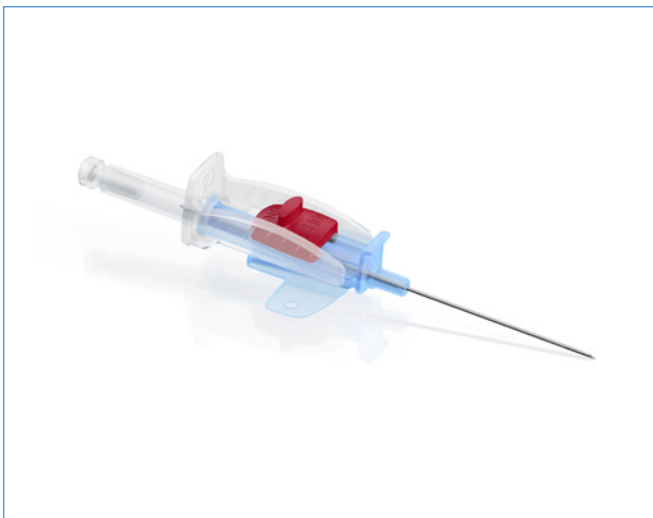
Since the blood flow in the arteries are much higher than in the veins, it is very important that the arterial catheters are easy to handle. They must have high first-time insertion success and the blood control is absolutely vital, since the risk of leakage is higher.

Maria Bengtsson Lindén, specialist nurse

## SWiTCH

– safe and easy to use

**SWiTCH is an automatic safety arterial catheter with flow switch that offers safe and easy use with full blood control.**



### User-controlled blood flow

The red flow switch provides easy blood control and clearly marks the arterial entry. Insertion and handling is facilitated in a blood-free way, putting you in full control of the situation.

### Size matters

SWiTCH is available in gauge sizes 20 and 22. Using a 22G catheter improves first-attempt success rate compared to a 20G catheter.<sup>1</sup> After removal lower incidence of arterial occlusion and higher blood flow can be measured when using 22G compared to 20G.<sup>1</sup>

Reference: 1. Evren Eker, H. et al. The impact of two arterial catheters, different in diameter and length, on postcannulation radial artery diameter, blood flow, and occlusion in atherosclerotic patients. *Journal of Anesthesia* (2009) 23: 347-352.

# Item overview

PRODUCT CODE	DESCRIPTION	CATHETER MATERIAL	GAUGE G	Ø x LENGTH MM	COLOUR CODE	FLOW RATE ML/MIN	PACK SIZE PCS
<b>CLiP® Neo</b>							
NW241901	CLiP® Neo - Automatic safety I.V. catheter	FEP	24	0,7 x 19	Yellow	22	50
NW261901	CLiP® Neo - Automatic safety I.V. catheter	FEP	26	0,6 x 19	Violet	15	50
<b>CLiP® Ported</b>							
VP144511	CLiP® Ported - Automatic safety I.V. catheter with port	PUR	14	2,0 x 45	Orange	290	50
VP164511	CLiP® Ported - Automatic safety I.V. catheter with port	PUR	16	1,7 x 45	Grey	200	50
VP174511	CLiP® Ported - Automatic safety I.V. catheter with port	PUR	17	1,5 x 45	White	140	50
VP184511	CLiP® Ported - Automatic safety I.V. catheter with port	PUR	18	1,2 x 45	Green	100	50
VP183211	CLiP® Ported - Automatic safety I.V. catheter with port	PUR	18	1,2 x 32	Green	110	50
VP203211	CLiP® Ported - Automatic safety I.V. catheter with port	PUR	20	1,0 x 32	Pink	64	50
VP202511	CLiP® Ported - Automatic safety I.V. catheter with port	PUR	20	1,0 x 25	Pink	68	50
VP222511	CLiP® Ported - Automatic safety I.V. catheter with port	PUR	22	0,8 x 25	Blue	38	50
VP241911	CLiP® Ported - Automatic safety I.V. catheter with port	PUR	24	0,7 x 19	Yellow	22	50
VP144501	CLiP® Ported - Automatic safety I.V. catheter with port	FEP	14	2,0 x 45	Orange	290	50
VP164501	CLiP® Ported - Automatic safety I.V. catheter with port	FEP	16	1,7 x 45	Grey	200	50
VP174501	CLiP® Ported - Automatic safety I.V. catheter with port	FEP	17	1,5 x 45	White	140	50
VP184501	CLiP® Ported - Automatic safety I.V. catheter with port	FEP	18	1,2 x 45	Green	100	50
VP183201	CLiP® Ported - Automatic safety I.V. catheter with port	FEP	18	1,2 x 32	Green	110	50
VP203201	CLiP® Ported - Automatic safety I.V. catheter with port	FEP	20	1,0 x 32	Pink	64	50
VP202501	CLiP® Ported - Automatic safety I.V. catheter with port	FEP	20	1,0 x 25	Pink	68	50
VP222501	CLiP® Ported - Automatic safety I.V. catheter with port	FEP	22	0,8 x 25	Blue	38	50
VP241901	CLiP® Ported - Automatic safety I.V. catheter with port	FEP	24	0,7 x 19	Yellow	22	50
<b>CLiP® Winged</b>							
VW144511	CLiP® Winged - Automatic safety I.V. catheter	PUR	14	2,0 x 45	Orange	290	50
VW164511	CLiP® Winged - Automatic safety I.V. catheter	PUR	16	1,7 x 45	Grey	200	50
VW174511	CLiP® Winged - Automatic safety I.V. catheter	PUR	17	1,5 x 45	White	140	50
VW184511	CLiP® Winged - Automatic safety I.V. catheter	PUR	18	1,2 x 45	Green	100	50
VW183211	CLiP® Winged - Automatic safety I.V. catheter	PUR	18	1,2 x 32	Green	110	50
VW203211	CLiP® Winged - Automatic safety I.V. catheter	PUR	20	1,0 x 32	Pink	64	50
VW222511	CLiP® Winged - Automatic safety I.V. catheter	PUR	22	0,8 x 25	Blue	38	50
VW241911	CLiP® Winged - Automatic safety I.V. catheter	PUR	24	0,7 x 19	Yellow	22	50
VW144501	CLiP® Winged - Automatic safety I.V. catheter	FEP	14	2,0 x 45	Orange	290	50
VW164501	CLiP® Winged - Automatic safety I.V. catheter	FEP	16	1,7 x 45	Grey	200	50
VW174501	CLiP® Winged - Automatic safety I.V. catheter	FEP	17	1,5 x 45	White	140	50
VW184501	CLiP® Winged - Automatic safety I.V. catheter	FEP	18	1,2 x 45	Green	100	50
VW183201	CLiP® Winged - Automatic safety I.V. catheter	FEP	18	1,2 x 32	Green	110	50
VW203201	CLiP® Winged - Automatic safety I.V. catheter	FEP	20	1,0 x 32	Pink	64	50
VW222501	CLiP® Winged - Automatic safety I.V. catheter	FEP	22	0,8 x 25	Blue	38	50
<b>SWITCH</b>							
SW204511	SWITCH - Automatic safety arterial catheter	PUR	20	1,1 x 45	Pink	49	25
SW224511	SWITCH - Automatic safety arterial catheter	PUR	22	0,9 x 45	Blue	27	25
SW223511	SWITCH - Automatic safety arterial catheter	PUR	22	0,9 x 35	Blue	27	25
SW204501	SWITCH - Automatic safety arterial catheter	FEP	20	1,1 x 45	Pink	49	25
SW224501	SWITCH - Automatic safety arterial catheter	FEP	22	0,9 x 45	Blue	27	25
SW223501	SWITCH - Automatic safety arterial catheter	FEP	22	0,9 x 35	Blue	27	25

Our products are not made with natural rubber latex and they are DEHP and PVC free.



stick  
to safety

For further information, please visit our website [www.stick-to-safety.com](http://www.stick-to-safety.com) or contact us:

**Austria**  
Greiner Bio-One GmbH  
Phone +43 7583 6791-0  
E-Mail [office@at.gbo.com](mailto:office@at.gbo.com)

**Belgium**  
MLS  
Phone +32 (0) 56 53 11 33  
E-Mail [info@mls.be](mailto:info@mls.be)

**Switzerland**  
Greiner Bio-One Schweiz GmbH  
Phone +41 7 12 28 55 22  
E-Mail [office@ch.gbo.com](mailto:office@ch.gbo.com)

**Germany**  
Greiner Bio-One GmbH/Preanalytics  
Phone +49 7022 948-0  
E-Mail [office@de.gbo.com](mailto:office@de.gbo.com)

**Denmark**  
CODAN DEHA ApS  
Phone +45 49 12 11 80  
E-Mail [codan@codandeha.dk](mailto:codan@codandeha.dk)

**Spain**  
Greiner Bio-One España S.A.U.  
Phone +34 91 652 77 07  
E-Mail [info@es.gbo.com](mailto:info@es.gbo.com)

**Finland**  
Pamark Oy  
Phone +358 20 1555660  
E-Mail [asiakaspalvelu@pamark.fi](mailto:asiakaspalvelu@pamark.fi)

**France**  
Greiner Bio-One SAS  
Phone +33 1 69 86 25 25  
E-Mail [office@fr.gbo.com](mailto:office@fr.gbo.com)

**United Kingdom**  
Greiner Bio-One Ltd  
Phone +44 (01453) 825255  
E-Mail [info.uk@gbo.com](mailto:info.uk@gbo.com)

**Ireland**  
Vygon Ireland Ltd  
Phone +353 (1) 410 5715  
E-Mail [info@vygon.ie](mailto:info@vygon.ie)

**Italy**  
Greiner Bio-One Italia S.r.l.  
Phone +39 02 94383340  
E-Mail [office@it.gbo.com](mailto:office@it.gbo.com)

**Netherlands**  
Greiner Bio-One B.V.  
Phone +31 172 4209 00  
E-Mail [info@nl.gbo.com](mailto:info@nl.gbo.com)

**Norway**  
CODAN NORGE AS  
Phone +47 99 31 00 00  
E-Mail [codan@codan.no](mailto:codan@codan.no)

**Portugal**  
Vacuette Portugal S.A.  
Phone +351 252 647 721  
E-Mail [info@vacuette.pt](mailto:info@vacuette.pt)

**Sweden**  
CODAN TRIPLUS AB  
Phone +46 300 35660  
E-Mail [codan@codantriplus.se](mailto:codan@codantriplus.se)

**Serbia**  
Layon Ltd.  
Phone +381 11 303 68 10  
E-Mail [office@layons.rs](mailto:office@layons.rs)

**Legal manufacturer**  
Vigmed AB  
Kungsgatan 6, 252 21 Helsingborg, Sweden  
Phone +46 42 28 00 90  
E-Mail [info@vigmed.com](mailto:info@vigmed.com)